

# TEXAS NATIVE SEEDS COASTAL PRAIRIE NATIVE SEED PROJECT

**Keith Pawelek**

*Associate Director*

*Texas Native Seeds Project*

*Caesar Kleberg Wildlife Research Institute*

*Texas A&M University-Kingsville*





# Where It All Began



## What we do

- Collect seeds of native plants from natural stands
- Test, select, and increase
- Provide seed stock to commercial growers
- Find the best methods to restore native plants

## Mission: Develop native seed sources for Texas.

- 36 Native seed sources developed
- More than 50 restoration projects



# Texas Native Seeds Project Regions



Sam Lutfy -  
Permian  
Basin/Panhandle



Colin Shackelford -  
West Texas



J. Randy Bow -  
Central Texas



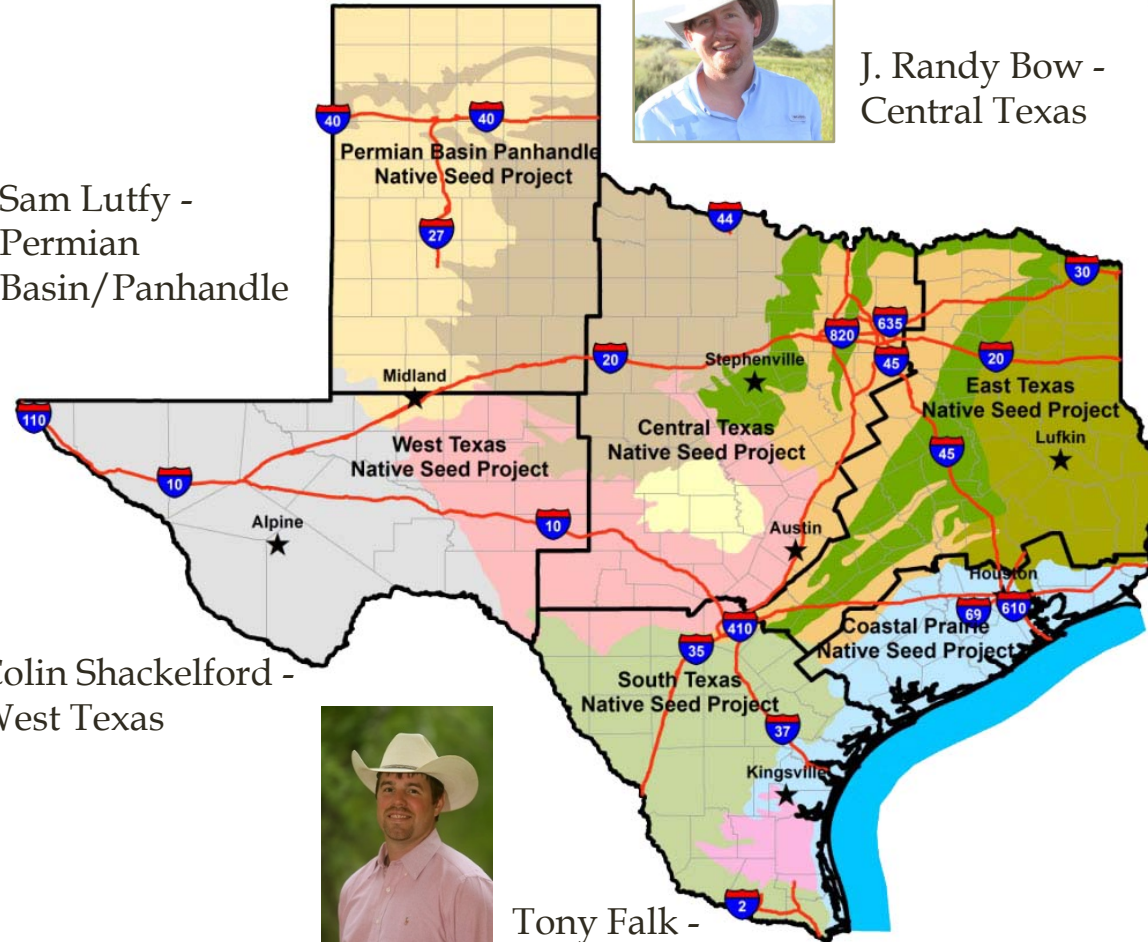
Tyler Wayland-  
East Texas



Douglas Jobs-  
East Texas

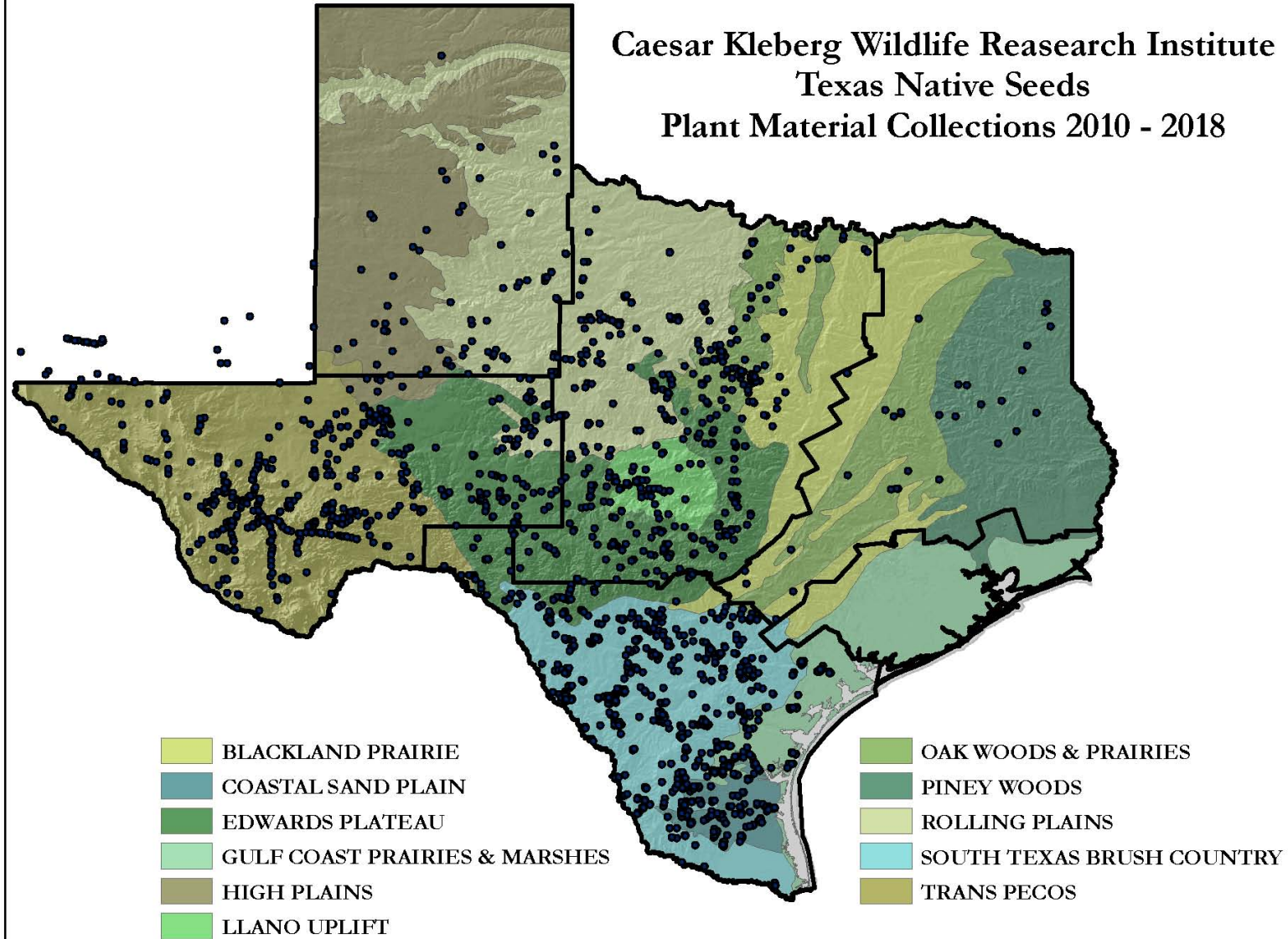


Tony Falk -  
South Texas





Caesar Kleberg Wildlife Research Institute  
Texas Native Seeds  
Plant Material Collections 2010 - 2018





# What's it going to take?



- œ Plant material
- œ Determining the best methods for restoration and reclamation
- œ Education
- œ Support

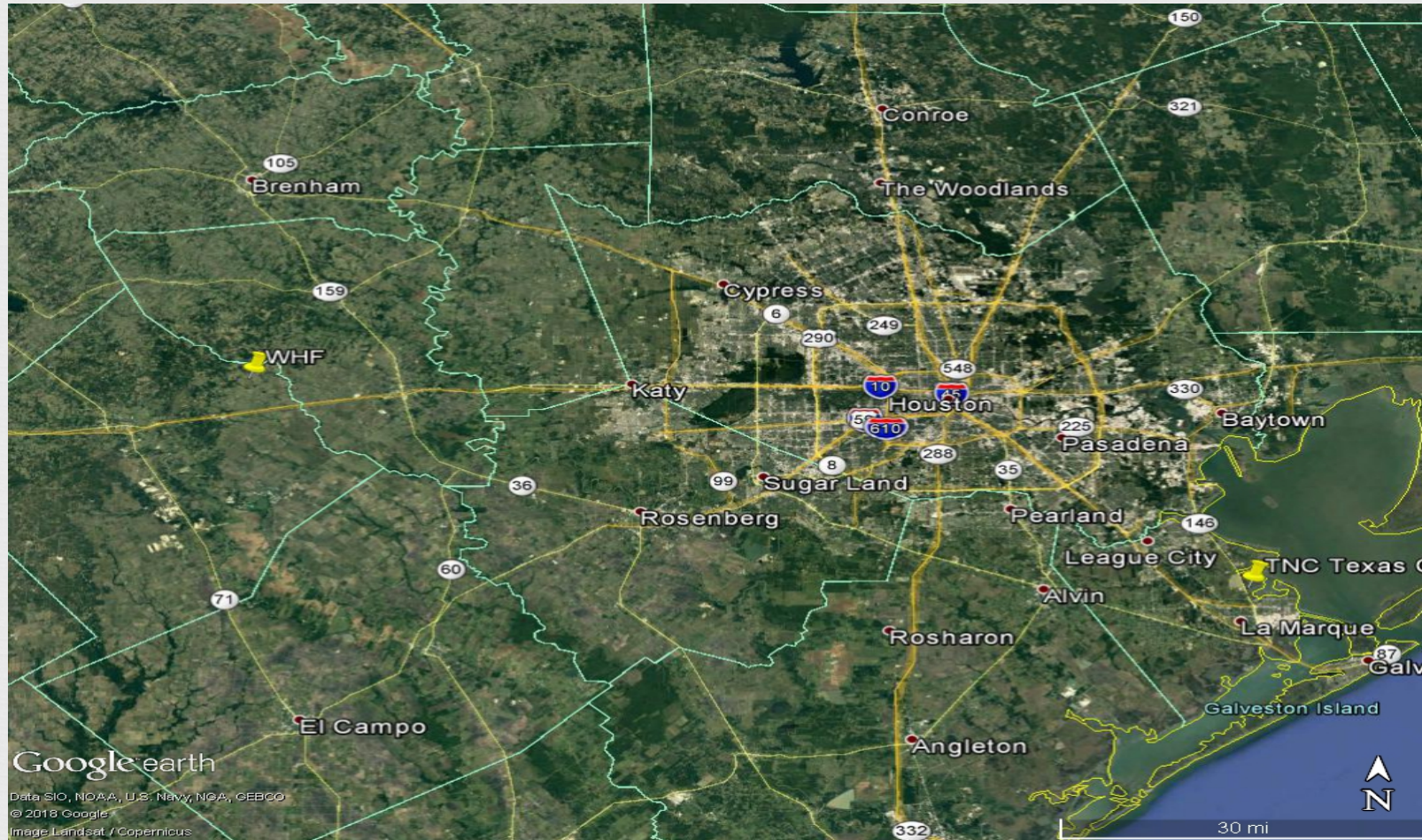


# Problems or Opportunities?

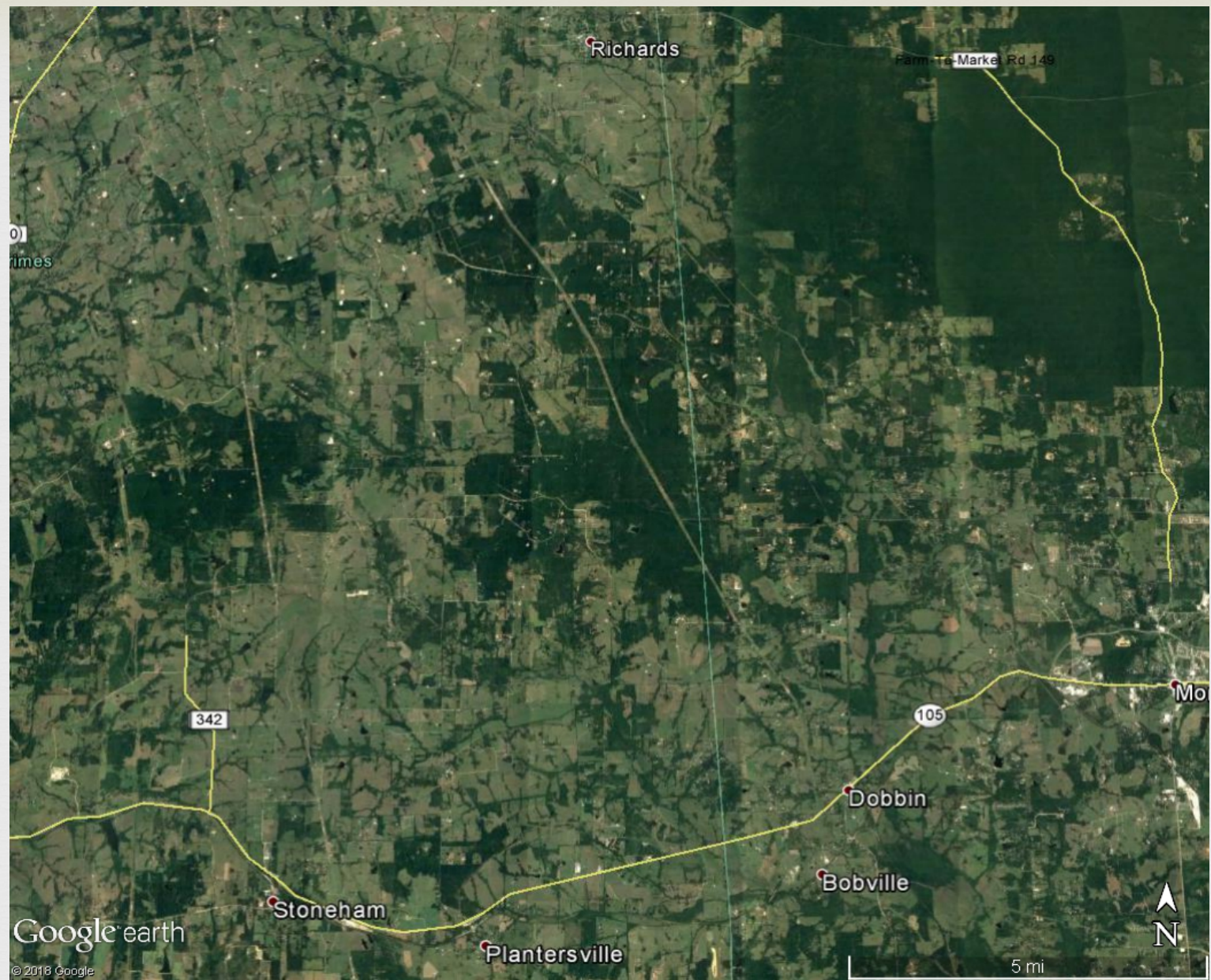




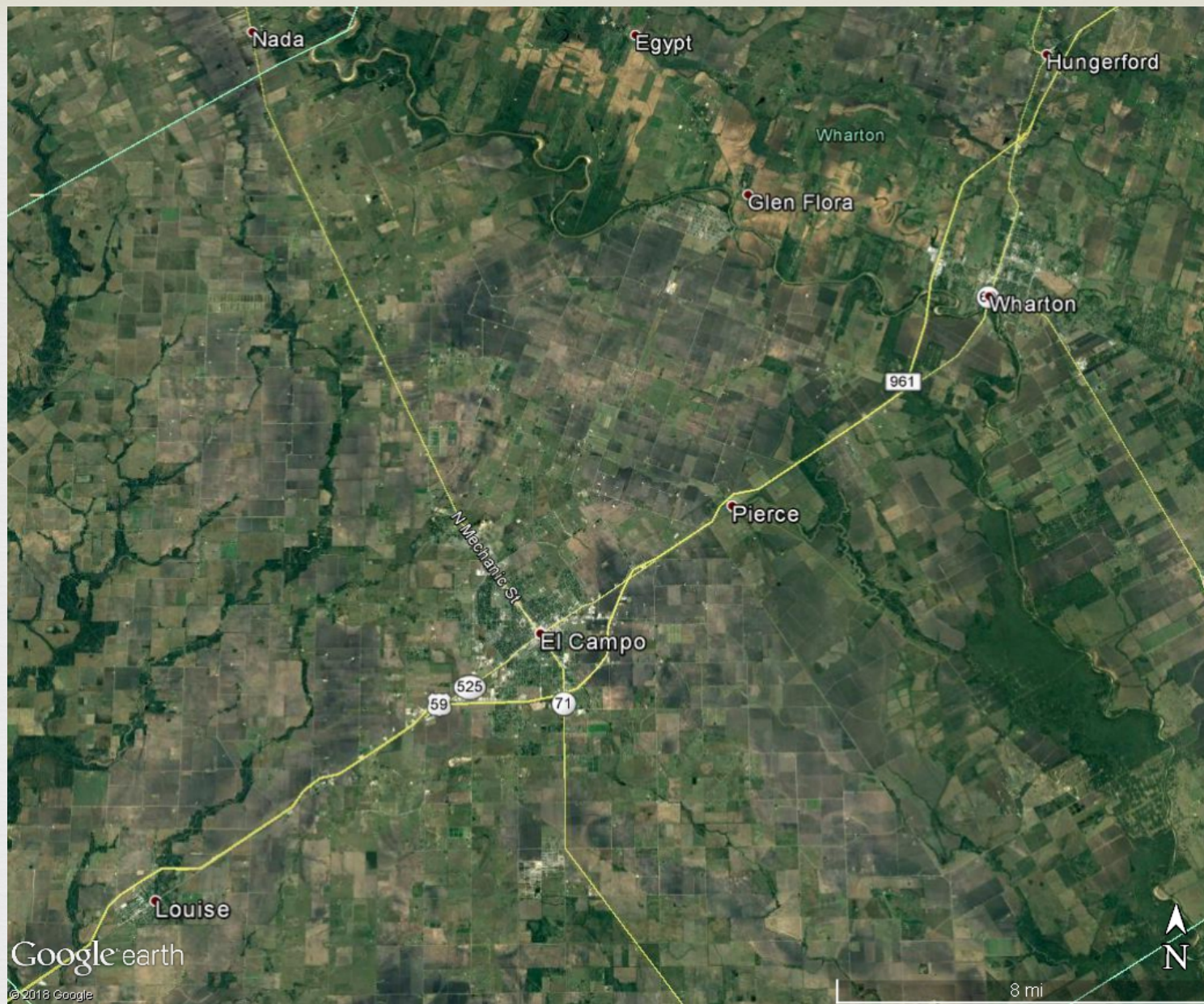
# Coastal Prairie





























# Lessons Learned



- œ Ecotypic seed of known quality (PLS)
- œ Adequate supply of above seed
- œ Education
- œ Demonstrations
- œ Planning
- œ Site preparation
- œ Proper planting
- œ Patience





# Coastal Prairies Assistant Director



Doug Jobes

CKWRI-Texas Native Seeds

Assistant Director-Coastal Prairies Region

Cell- 229-256-8620

Douglas.Jobes@tamuk.edu

Like us on Facebook!

<https://www.facebook.com/Texas-Native-Seeds-1996810537214840/>





# Support



## œ WHF

- œ Project partner sine 2017
- œ Working space, technical expertise, collections

## œ TNC

- œ Project partner since 2017
- œ Working space, technical expertise, collections

