

## Description

Maverick Germplasm is a blend of 7 populations of pink pappusgrass (*Pappophorum bicolor* E. Fourn.) from the South Texas Plains. Pink pappusgrass is a co-dominant bunchgrass found on a variety of soils in the region. Maverick Germplasm is a cooperative release of the *South Texas Natives* Program of the Caesar Kleberg Wildlife Research Institute at Texas A&M University-Kingsville, the USDA NRCS E. “Kika” de la Garza Plant Materials Center, and Texas AgriLife Research Station-



Beeville. This grass grows 2-5' tall and produces seed and foliage from March through November. Selections included in Maverick Germplasm were chosen by evaluations of 70 collections of pappusgrass from South Texas at 4 locations for multiple years. Selected accessions have superior active seed germination, greater overall seed production, and higher plant vigor ratings than other collections evaluated.

## Uses & Adaptation

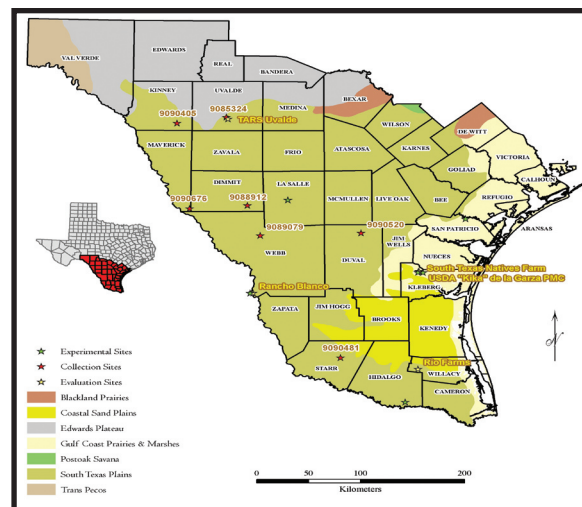
Maverick Germplasm is recommended for use in rangeland seed mixes, highway right of way plantings, retired cropland restoration plantings, and for use in efforts to diversify

invasive grass monocultures. Maverick Germplasm provides good forage for livestock, and is an excellent bunchgrass that provides good cover for wildlife. It may also be useful in urban wildscaping and ornamental plantings. The foliage provides deep green color and seedheads are an attractive pink coloration.

This release is adapted to a variety of soils. Components originate from gravelly loam, clay loam, and sandy loam soils. Maverick Germplasm is also adapted to saline soils common throughout South Texas. This release will perform best in the South Texas Plains, Coastal Sand Plains, and Gulf Coast Prairies and Marshes eco-regions of Texas. Good performance is expected in the southern Edwards Plateau, eastern Trans Pecos, and throughout northern Mexico, however it has not been tested in these areas.

## Planting Methods

Best stands of Maverick Germplasm are obtained by drilling coated seed into a firm, well-prepared seedbed in late August-early



October in South Texas. Plantings done at other times of the year typically have no emergence until late summer/early autumn, regardless of moisture availability. Coated or uncoated seed can also be planted by broadcasting, but culti-packing or light dragging is recommended to prevent seed loss to animals or wind. Seed should be planted no deeper than 1/4" below the soil surface. For calibration purposes, Maverick Germplasm contains approximately 322,000 uncoated seeds per bulk pound. Maverick Germplasm should be planted at a rate of 3 pounds pure live seed per acre for solid stands. The seeding rate in mixed species plantings should be adjusted according to the desired amount of pink pappusgrass for the planting site. Increasing the seeding rate above recommended rates does not result in better stands of Maverick Germplasm.

Maverick Germplasm can also be established with vegetative transplants. Transplants should be planted when adequate soil moisture is present. Rapid spread and recruitment has been observed in transplant established stands. On most sites, a mixture of Maverick Germplasm pink pappusgrass and Webb Germplasm whiplash pappusgrass will provide the best results.

## Management

Newly planted stands of Maverick Germplasm should not be grazed for 1 year after planting to allow establishment and development of adequate rootstock. Plants can be grazed to 4" stubble height with no adverse affects. Pink pappusgrass plants should be allowed to produce seed annually to insure stand health. Pink pappusgrass is a long-lived perennial that is extremely drought and fire tolerant once established.

## Availability

Maverick Germplasm pink pappusgrass was released in 2010. Breeder and foundation seed are maintained by *South Texas Natives* in conjunction with the Texas Foundation Seed Service. Breeder seed can be obtained by contacting *South Texas Natives*.



## For More Information

*South Texas Natives*  
Caesar Kleberg Wildlife Research Institute  
Texas A&M University-Kingsville  
MSC 218, 700 University Blvd  
Kingsville, TX 78363

Phone: (361) 593-5550  
<http://ckwri.tamuk.edu/research-programs/south-texas-natives/>  
e-mail: [forrest.smith@tamuk.edu](mailto:forrest.smith@tamuk.edu)

or

USDA-NRCS E. "Kika" de la Garza  
Plant Materials Center  
3409 North FM 1355  
Kingsville, TX 78363

Phone: (361) 595-1313  
[www.plant-materials.nrcs.usda.gov/stpmc/](http://www.plant-materials.nrcs.usda.gov/stpmc/)

The U.S. Department of Agriculture (USDA) prohibits discrimination in all its programs and activities on the basis of race, color, national origin, gender, religion, age, disability, political beliefs, sexual orientation, and marital status or family status. (Not all prohibited bases apply to all programs.) Persons with disabilities who require alternative means for communication of program information (Braille, large print, audio tape, etc.) should contact USDA's TARGET center at 202-720-2600 (voice and TDD).

To file a complaint of discrimination, write USDA, Director, Office of Civil Rights, Room 326W, Whitten Building, 14th and Independence Avenue, SW, Washington, DC 20250-9410 or call (202) 720-5964 (voice or TDD). USDA is an equal opportunity provider and employer.

# Maverick

Germplasm Pink  
Pappusgrass

*Pappophorum bicolor*  
E. Fourn.

