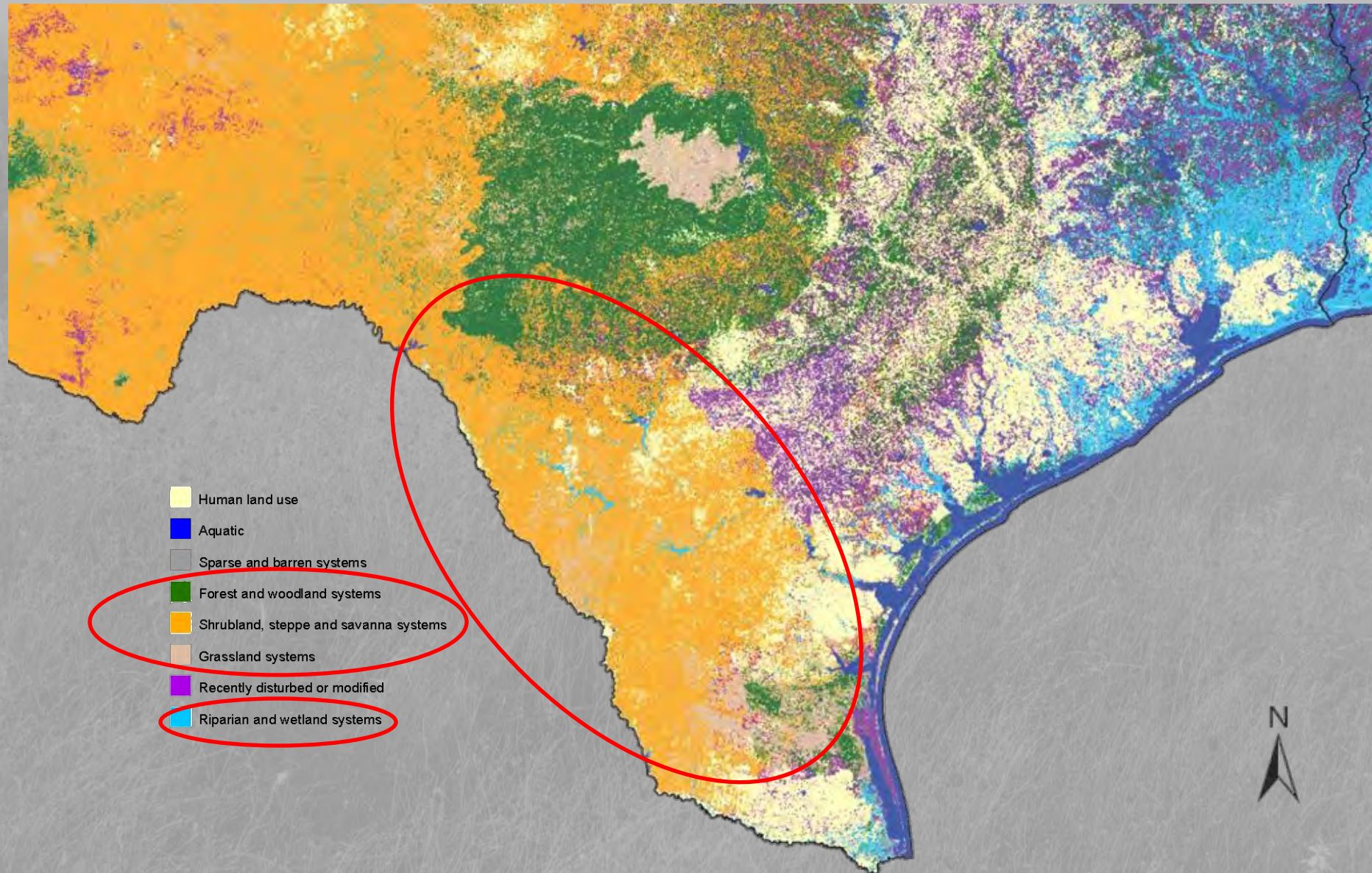


# NATIVE PLANTS: WHY THEY ARE IMPORTANT & THE IMPACT OF THE EAGLE FORD SHALES



FORREST S. SMITH  
SOUTH TEXAS NATIVES PROJECT DIRECTOR  
CAESAR KLEBERG WILDLIFE RESEARCH INSTITUTE

# LAND COVER IN SOUTH TEXAS





# NATIVE PLANT DIVERSITY





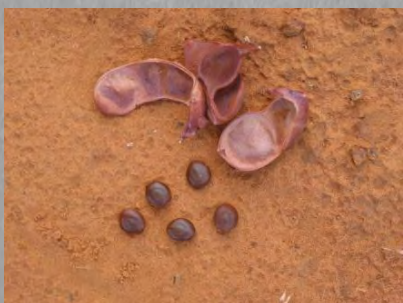




# PLANT SPECIES RICHNESS









# SOUTH TEXAS IS HYPER-DIVERSE









THIS IS NOT DIVERSE



BUFFELGRASS



# THIS IS SPECIES POOR



KR & KLEBERG BLUESTEMS



**CONCLUSIONS** The use of the four-step process for the development of a new product is a systematic approach that can be used by any organization. The process is designed to be flexible and can be adapted to the needs of any organization. The process is designed to be a continuous process and can be used for the development of new products, services, or processes. The process is designed to be a team effort and can be used by any organization. The process is designed to be a continuous process and can be used for the development of new products, services, or processes. The process is designed to be a team effort and can be used by any organization.



# EAGLE FORD SHALE IMPACTS

## PIPELINES

- PROLIFERATION OF BUFFELGRASS & OTHER EXOTICS BECAUSE OF USE IN REVEGETATION
- SOIL DISTURBANCE ALSO FACILITATES INVASION



## EXPLORATION AND PRODUCTION

- FRAGMENTATION OF HABITAT
- ROADS, FLOW LINES, PADS, PITS, & GATHERING FACILITIES, DISTURB AND BISECT HABITATS





# WHAT THE EAGLE FORD LOOKS LIKE





# WHY THE EAGLE FORD MATTERS?



“EXOTIC GRASS INVASIONS RESULT IN SIMPLIFIED ECOLOGICAL COMMUNITIES  
(KUVLESKY ET. AL. 2002).”



# NATIVE VS. EXOTIC

EXOTIC GRASS DOMINANT



NATIVE PLANT COMMUNITY



“REDUCTIONS IN DIVERSITY MAY HAVE LARGER IMPLICATIONS REGARDING ECOSYSTEM FUNCTION AND AVAILABLE USEABLE SPACE AND DENSITIES OF BIRD SPECIES SUCH AS NORTHERN BOBWHITES (SANDS ET. AL. 2009).”



# A CHAIN REACTION?



“EXOTIC GRASSES MAY PROVIDE LESS FOOD FOR BREEDING BIRD COMMUNITIES BECAUSE NATIVE PLANT SPECIES RICHNESS IS EVIDENTLY SUPPRESSED BY EXOTIC GRASS INFESTATIONS, THEREBY REDUCING THE NUMBER OF NICHES AVAILABLE FOR ARTHROPODS (FLANDERS ET. AL. 2006).”







# SEED COLLECTION





# POPULATION EVALUATION





# SEED INCREASE






# COMMERCIAL PRODUCTION





# RESULT: AVAILABILITY OF NATIVE SEEDS TO CONSUMERS

[Home](#)
[Our Products](#)
[Consulting](#)
[About Us](#)
[Contact Us](#)

## Our Products

- NATIVE GRASSES
- NATIVE GRASS MIXES
- SOUTH TEXAS NATIVES
- PASTURE GRASSES
- WILDLIFE
- WILDLIFE MIXES
- LAWN AND GARDEN
- SMALL GRAINS AND FORAGE
- WILDFLOWERS
- MISC AND ACCESSORIES
- PLANTING EQUIPMENT

## Spotlight

**BAT GUANO WITH HUMATE** - Improve the condition of your soil and plants with a mix of bat guano and humic acid. We have combined two of the best natural soil additives into one product! This mix can be applied

Home >> Our Products >> South Texas Natives >> Pink Pappusgrass, Maverick


### Pink Pappusgrass, Maverick

Maverick Germplasm is a blend of 7 populations of pink pappusgrass (*Pappophorum bicolor* E. Four.) from the South Texas Plains. Pink pappusgrass is a co-dominant bunchgrass found on a variety of soils in the region. Plant in early spring or late summer in South Texas. Planting rate is 3 - 4 PLS pounds per acre.



Listing Details

[Recommend](#)
[Print](#)
[Contact Owner](#)



Planting for Success One Seed at a Time

[GRASSES](#)
[FORAGES](#)
[LEGUMES](#)
[SMALL GRAINS](#)
[WILDLIFE](#)

Search  [Go](#)

Español [Go](#)

Locate Retailer  
Zipcode  [Go](#)

Visit the Pogue  
ONLINE  
STORE

South Texas Natives

- Chaparral Germplasm Hairy Grama
- Atascosa Germplasm Texas Grama
- La Salle Germplasm Arizona Cottontop
- Dilley Germplasm Slender Grama
- Catarina Blend Bristlegrass
- Welder Shortspike Windmillgrass
- Maniah Hooded Windmillgrass
- Maverick Germplasm Pink Pappusgrass

**GRASS**


**WILDLIFE**

**SMALL GRAINS**

**MEMBER OF**

- Texas Seed Trade Assoc.
- Southern Seed Assoc.
- American Seed Trade Assoc.
- Western Seed Assoc.

**Maverick Germplasm Pink Pappusgrass (*Pappophorum bicolor*)**



**Makeup/history:** Maverick Germplasm is a blend of seven accessions of pink pappusgrass, and will be released in the fall of 2009, by South Texas Natives, the South Texas Plant Materials Center and The Texas Agrilife Research Station in Beeville. Accessions comprising the blend were selected for seed production, plant vigor, and active seed germination. Maverick Germplasm pink pappusgrass is a native perennial bunch grass.

**Use:** Maverick Germplasm is recommended for upland wildlife planting and in range seeding mixes. Pink pappusgrass should perform well in rangeland plantings and wildlife habitat plantings. It has a fair forage value and has shown to be very drought tolerant. TXDOT has also said potential use in their plantings is high. Pink pappusgrass is seasonally competitive in areas dominated by non-native grasses.

**Establishment:** Maverick Germplasm should be planted at a rate of 3 lbs. pure live seed per acre for solid stands. It has also been planted in rowed planting using transplants. Pink pappusgrass is competitive with common weed species; fields have many volunteer plants emerging near them.

Pogue Agri Partners, Inc.

P.O. Drawer 399  
Physical Address: 287 Hwy 72 West  
P.O. Box 399, Beeville, TX 78842

Fax: (830) 583-9843



# DEMONSTRATION & TESTING







# 21 NATIVE SEED RELEASES FOR SOUTH TEXAS





# OUR FUTURE: TEXAS NATIVE SEEDS

