

# Citizen Science for Texas Birds



Record Format Template [Compatibility Mode] - Microsoft Excel (Product Activation Failed)

File Home Insert Page Layout Formulas Data Review View Acrobat

Clipboard Font Alignment Number Styles Cells Editing

Common Name

	A	B	C	D	E	F	G	H	I	J	K	L	M	N	O	P	Q	R
1	Common Name	Genus	Species	Number	Species Cor	Location Name	Latitude	Longitude	Date	Start Time	State/P Country	Protocol	Numbe	Duration	All obs	Effort Dis	Effort area acres	
2																		
3																		
4																		
5																		
6																		
7																		
8																		
9																		
10																		
11																		
12																		
13																		
14																		
15																		
16																		
17																		
18																		
19																		
20																		
21																		
22																		
23																		
24																		
25																		

Sheet1 Sheet2 Sheet3

Ready

**Minimum Needed:**  
Common Name  
Number  
Location Name  
Latitude & Longitude  
Date (00/00/0000)  
Start Time  
State/Province (TX)  
Country (US)  
Protocol  
Number of observers  
Duration (Minutes)  
All observations reported? Y or N  
Effort Distance OR Effort Area Acres

# Record Format Template

File Home Insert Page Layout Formulas Data Review View Acrobat

Paste Cut Copy Format Painter

Calibri 11 A A

B I U

Alignment

Wrap Text Merge & Center

General

\$ % , .00 .00

Number

Conditional Formatting as Table Cell Styles

Insert Delete

Cells

**MUST delete first row of column titles!**

	A	B	C	D	E	F	G	H	I	J	K	L
1	Common Name	Genus	Species	Number	Species Comment	Location	Latitude	Longitude	Date	Start Time	State/Prov	Country
2	Brown-crested Flycatcher			5		El Sauz	21.123456	-86.123456	8/11/2015	8:00	TX	US
3	Northern Mockingbird			6		El Sauz	21.123456	-86.123456	8/11/2015	8:00	TX	US
4	Tyrannus sp.			3		El Sauz	21.123456	-86.123456	8/11/2015	8:00	TX	US
5	Mourning Dove			8		El Sauz	21.123456	-86.123456	8/11/2015	8:00	TX	US
6	Verdin			3		El Sauz	21.123456	-86.123456	8/11/2015	8:00	TX	US
7	Black-bellied Whistling Duck			4		El Sauz	21.123456	-86.123456	8/11/2015	8:00	TX	US
8	Woodpecker sp.			3		El Sauz	21.123456	-86.123456	8/11/2015	8:00	TX	US
9	Cowbird sp.			2		El Sauz	21.123456	-86.123456	8/11/2015	8:00	TX	US
10	Nighthawk sp.			1		El Sauz	21.123456	-86.123456	8/11/2015	8:00	TX	US
11	Golden-fronted Woodpecker			4		El Sauz	21.123456	-86.123456	8/11/2015	8:00	TX	US
12	Black-crested Titmouse			3		El Sauz	21.123456	-86.123456	8/11/2015	8:00	TX	US
13	Ladder-backed Woodpecker			2		El Sauz	21.123456	-86.123456	8/11/2015	8:00	TX	US
14	Northern Bobwhite			2		El Sauz	21.123456	-86.123456	8/11/2015	8:00	TX	US
15	Great Egret			4		El Sauz	21.123456	-86.123456	8/11/2015	8:00	TX	US
16	Northern Cardinal			2		El Sauz	21.123456	-86.123456	8/11/2015	8:00	TX	US
17	Greater Roadrunner			3		El Sauz	21.123456	-86.123456	8/11/2015	8:00	TX	US
18	Blue-gray Gnatcatcher			1		El Sauz	21.123456	-86.123456	8/11/2015	8:00	TX	US
19	Common Ground Dove			1		El Sauz	21.123456	-86.123456	8/11/2015	8:00	TX	US
20	Wild Turkey			4		El Sauz	21.123456	-86.123456	8/11/2015	8:00	TX	US
21	Cardinalis sp.			1		El Sauz	21.123456	-86.123456	8/11/2015	8:00	TX	US
22	Green Jay			1		El Sauz	21.123456	-86.123456	8/11/2015	8:00	TX	US
23	Groove-billed Ani			2		El Sauz	21.123456	-86.123456	8/11/2015	8:00	TX	US
24	Myiarchus sp.			1		El Sauz	21.123456	-86.123456	8/11/2015	8:00	TX	US
25	Black-throated Sparrow			3		El Sauz	21.123456	-86.123456	8/11/2015	8:00	TX	US

**MUST save as:  
"CSV (Comma Delimited)"**

**EXAMPLE Record Format Template**

or use

[www.stwb.org](http://www.stwb.org)

Create an account or sign-in



## South Texas Wintering Birds

From ranch to regional records—help create a living bird atlas

[Home](#)[About STWB](#)[Submit Observations](#)[Explore Data](#)[My STWB](#)[Sign In or Register as a New User](#)

### Welcome to South Texas Wintering Birds eBird

Contribute your observations to a database for the South Texas region. Whether you are on a large private ranch, small yard in the city, or public nature area -- if you go birding, we need your sightings. Help us better understand the richness, abundance and changes in bird life in South Texas.

[Register and get started](#)[Learn more about STWB](#)[View and explore data](#)[More about STWB](#) | [More about CKWRI](#)

### News and Features

#### [Fall migration is here!](#)

28 September 2015

If you haven't noticed the new neighbors flying by, start looking up! Fall migration has begun with everyone moving south for the winter. Researchers from CKWRI spotted flocks of Orchard Orioles on the move during the monthly surveys of South Texas ranches. Various species of warblers were also sighted including Wilson's, Canada, and Yellow warblers! [...]

#### [Spreading Citizen Science Opportunities to Texas Teachers!](#)

21 August 2015

Researchers with STWB will be presenting a hands-on workshop at the CAST 2015 conference sponsored by the Science Teachers Association of Texas. Teachers will have the opportunity to walk through the process of data entry via the website and an Excel file. They will also learn the different features of the STWB website so they [...]

## Sign In

User Name

Password

☒ Stay signed in

Sign In

Cancel

[Forgot User Name?](#) | [Forgot Password?](#) | [Need an Account?](#)

## Need an Account?

You'll need an account unless you've registered with one of these projects:

- Bird Academy
- BirdSleuth
- Celebrate Urban Birds
- eBird
- Great Backyard Bird Count
- Macaulay Library
- NestWatch
- Project FeederWatch
- YardMap

[Create an Account](#)

## 1 2 3 Where did you bird?

Identify the location where you made your observations.

### Choose from Your Locations

El Sauz

[Edit "My Locations" list](#)

### Find it on a Map

### Use Latitude/Longitude

Create a new location using latitude and longitude.

### Select an entire city, county, state, or country

If you were birding across a very large area (e.g., an entire state, county, or city) select this option. Please consider using more precise locations when reporting to eBird so that your observations are more valuable for analysis .

### Import Data

Import data from a spreadsheet, database, or birding program. [Learn how](#)



Click to import CSV file



# South Texas Wintering Birds

From ranch to regional records—help create a living bird atlas

[Home](#)[About](#)[Submit Observations](#)[Explore Data](#)[My eBird](#)[Help](#)

Hello Janel Ortiz (CKWRI\_Birds) | [Preferences](#) | [Sign Out](#)

[Language](#)

- [Deutsch](#)
- [English](#)
- [Español](#)
- [Français](#)
- [Português](#)
- [Português \(Brasil\)](#)
- [Türkçe](#)
- [中文\(繁體\)](#)

Click and select CSV file

## Import a file

Choose a file to import

\*indicates a required field

\*File:  No file selected.

\*Format: ☐ eBird Checklist Format (Grid)  
☒ eBird Record Format (Extended)

- [Deutsch](#)
- [English](#)
- [Español](#)
- [Français](#)
- [Português](#)
- [Português \(Brasil\)](#)
- [Türkçe](#)
- [中文\(繁體\)](#)

## My imports

### Files you have imported:

[Import a file](#) | [My eBird](#)

#### Import 4 - "NBT\_Janel\_Aug-Sept2015.csv" - Processed

[Delete import](#)

Imported on Oct 16, 2015 3:45:16 PM - 6 checklists imported, 0 submitted

#### 6 checklists are not ready

[Delete these checklists](#)

14 species are unknown to us (affects 6 checklists) -- [fix species](#)

#### Import 3 - "NBT\_Janel\_Aug-Sept2015.csv" - Completed

Imported on Sep 30, 2015 11:43:51 AM - 6 checklists imported, 6 submitted

#### Import 2 - "BBS\_Maia&Tom\_alldata2.csv" - Completed

[Delete import](#)

Imported on Aug 21, 2015 1:23:37 PM - 39 checklists imported, 39 submitted

#### Import 1 - "NBT\_Maia&Tom\_alldata2.csv" - Completed

[Delete import](#)

Error in name, missing hyphen, species groups



## Fix species

“NBT\_Janel\_Aug-Sept2015.csv” - unknown species: 14

Some species are unknown to us. Tell us which eBird species they should match and click “apply fixes”.

Unknown species		Should match	Checklists affected
Cardinalis sp.	➔	Northern Cardinal/Pyrrhuloxia - <i>Cardinalis cardinalis/sinuatus</i> <a href="#">change</a>	5 <a href="#">view</a> <a href="#">delete</a>
Dove sp.	➔	pigeon/dove sp. - <i>Columbidae</i> sp. <a href="#">change</a>	4 <a href="#">view</a> <a href="#">delete</a>
Tyrannus sp.	➔	Tropical/Couch's Kingbird - <i>Tyrannus melancholicus/couchii</i> <a href="#">change</a>	4 <a href="#">view</a> <a href="#">delete</a>
Common Ground Dove	➔	Common Ground-Dove - <i>Columbina passerina</i> <a href="#">change</a>	4 <a href="#">view</a> <a href="#">delete</a>

Click “Change” and search for species in question.

May have to enter hyphen (ex: Common Ground-Dove)

or enter as genus or species group (ex: *Cardinalis* sp. >> Northern Cardinal/Pyrrhuloxia)

When done, click “Apply Fixes” at the bottom of the page.

# Return “Home,” then click “My STWB”

## My STWB

Personalize your eBird account, manage your locations and observations and store your personal lists.

Your South Texas Bird List: **168 Species**

Updated 5 sec ago.

### Your Stats

Create yearly or weekly reports

Total Species	168	116	0
Total Checklists	421	52	0

### Your Lists

Major Regions	Country	State/Province	County
	Life	Year	Month
World	<a href="#">168</a>	<a href="#">116</a>	<a href="#">0</a>
North America	<a href="#">168</a>	<a href="#">116</a>	<a href="#">0</a>

### Support eBird



Donate Now

### My Checklists

[Summarize My Observations](#)

Create frequency, abundance, and other tables of my observations.

[Manage My Checklists](#)

View, edit, print, share or download my checklists.

[My Shared Checklists](#)

Checklists that other eBird users have shared with me

[Manage My Locations](#)

Add new and edit existing locations.

[Import Data](#)

Import data from a spreadsheet, database, or birding program.

[Manage Imported Data](#)

View, fix, and submit your imported data

# EXAMPLE of 2015 Year Report

YEAR REPORT: High Count

[Printable version](#) | [Download this report](#)

High Count

Abundance

Frequency

Group Size

Species Totals

## Report Details

Date range:

Jan 1, 2015 - Dec 31, 2015

Total # of Species:

143

Total # of Checklists:

52

Location(s): El Sauz; San Antonio Viejo; Santa Rosa

## Summary

	Jan 2015	Feb 2015	Mar 2015	Apr 2015	May 2015	Jun 2015	Jul 2015	Aug 2015	Sep 2015	Oct 2015	Nov 2015	Dec 2015
Number of Species	46	49	66	59	104	104	--	50	61	--	--	--
Number of Individuals	456	464	729	844	16,427	16,427	--	303	512	--	--	--
Number of Checklists	10	10	10	10	3	3	--	3	3	--	--	--

## Highest Count for a Species (sample size)

[Hide Sample Size](#)

Species Name	Jan 2015	Feb 2015	Mar 2015	Apr 2015	May 2015	Jun 2015	Jul 2015	Aug 2015	Sep 2015	Oct 2015	Nov 2015	Dec 2015
Black-bellied Whistling-Duck	--	--	--	2 (1)	--	--	--	4 (1)	2 (1)	--	--	--
duck sp.	--	--	1 (1)	--	--	--	--	--	--	--	--	--
Scaled Quail	--	--	--	--	6 (1)	6 (1)	--	--	--	--	--	--
Northern Bobwhite	--	13 (1)	4 (4)	12 (9)	582 (3)	582 (3)	--	5 (3)	10 (3)	--	--	--
Wild Turkey	--	13 (1)	2 (2)	4 (4)	90 (3)	90 (3)	--	4 (1)	--	--	--	--
American White Pelican	--	--	--	--	2 (1)	2 (1)	--	--	--	--	--	--
Great Egret	--	--	2 (1)	1 (1)	--	--	--	4 (1)	--	--	--	--
Cattle Egret	--	--	--	14	48	48	--	--	--	--	--	--

# Click “View and Explore” tab

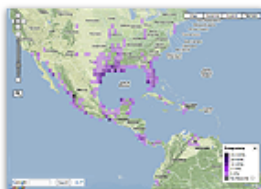
## View and Explore Data



### Explore a Region

Recent sightings, checklists, birding activity, best hotspots, and top birders for a county, state, province, or country.

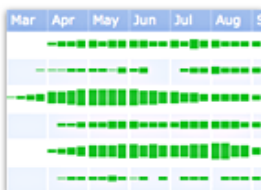
Explore by county or state



### Species Maps

Explore interactive range maps by species or subspecies — zoom in for details

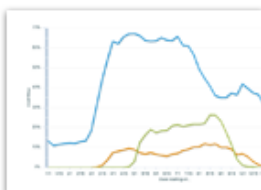
Look for specific species, shows frequency of entry



### Bar Charts

Find out what birds to expect throughout the year in a region or location

Rare to widespread presence based by month



### Line Graphs

Explore different metrics of species occurrence in a region or location

Can compare up to five species!

#### Arrivals and Departures

Arrivals and departures for a country, state/province, county, or hotspot

#### All-Time First/Last Records

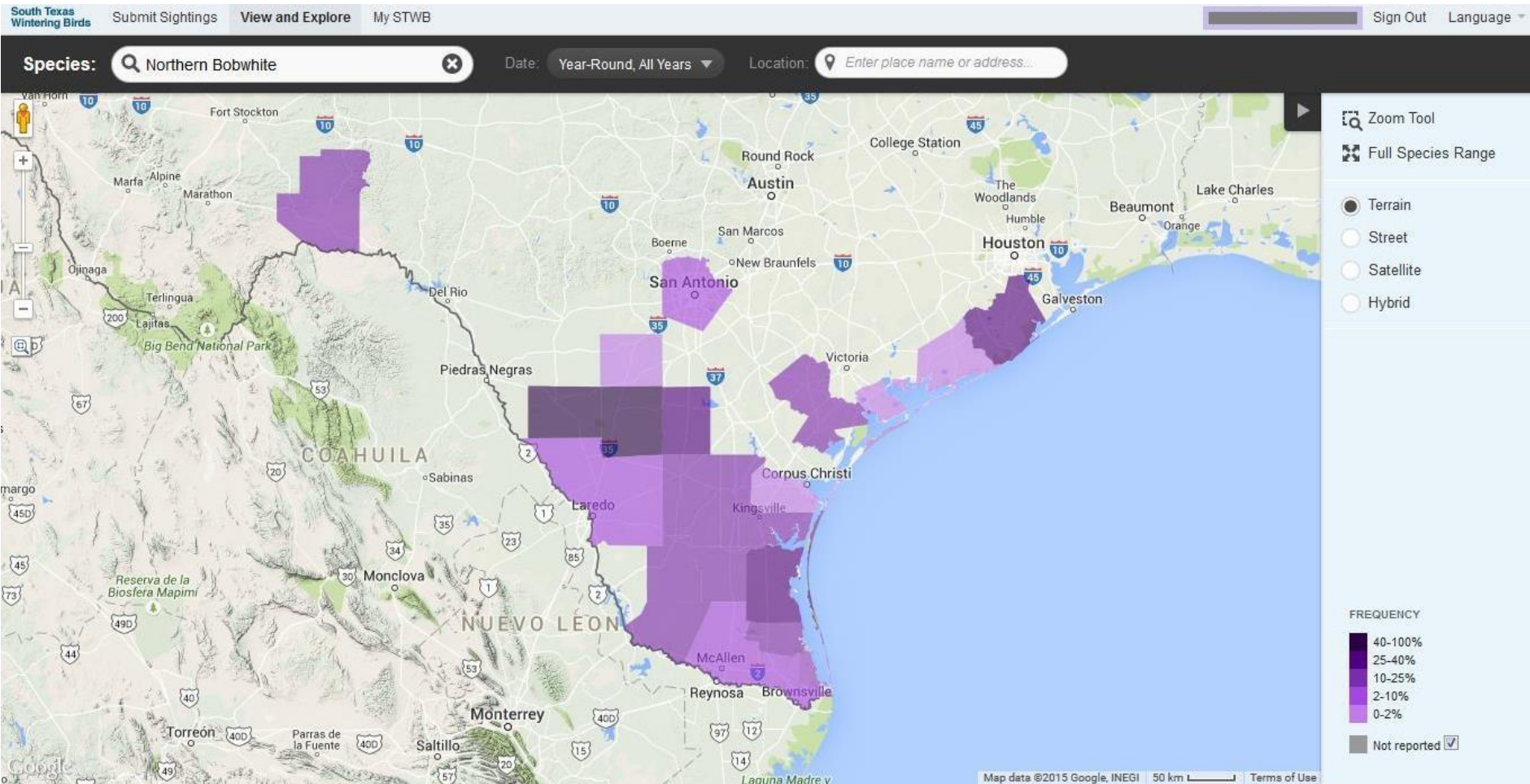
All-time records for species arrival and departure in a region

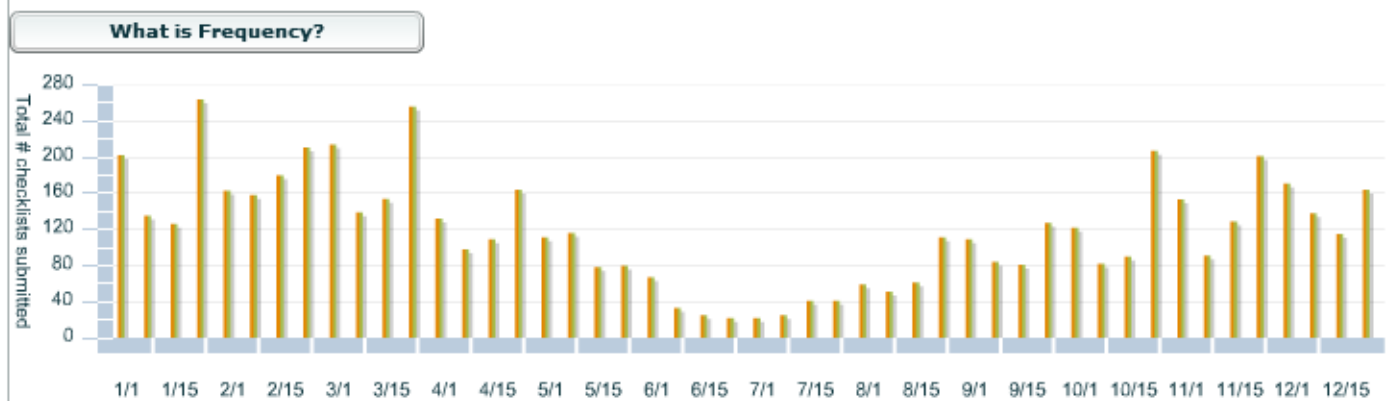
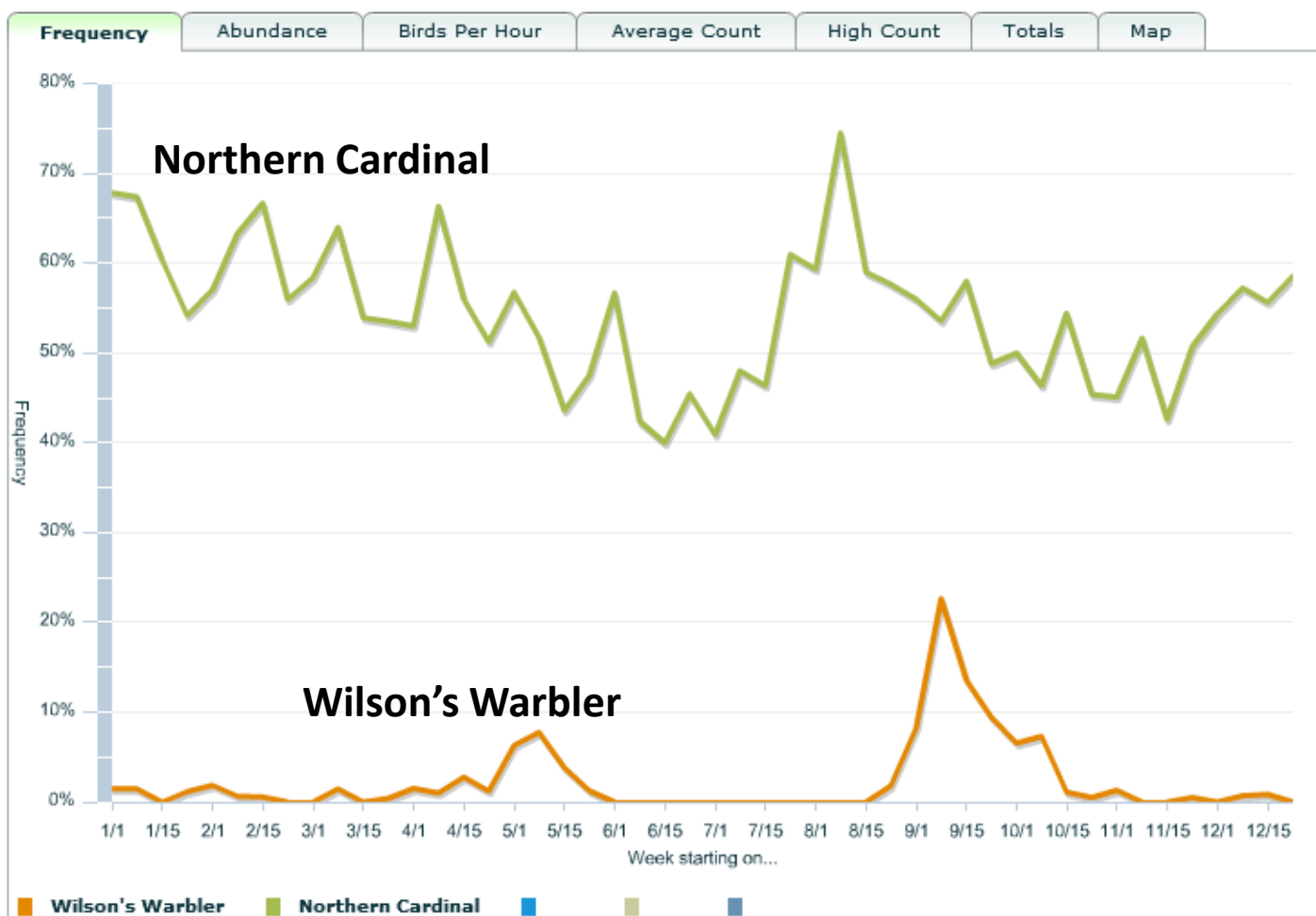
#### High Counts

Species high counts for a region

#### Summary Tables - Your Data

# Species Map for Northern Bobwhite





1 2 3 **Where did you bird?**

**Many other ways to enter data!**

Identify the location where you made your observations.

**Choose from Your Locations**

El Sauz

[Edit "My Locations" list](#)

**List of all existing locations from previous entries**

**Find it on a Map**

**Enter the state to find your location on a map**

**Use Latitude/Longitude**

Create a new location using latitude and longitude.

**Use your GPS location**

**Select an entire city, county, state, or country**

If you were birding across a very large area (e.g., an entire state, county, or city) select this option. Please consider using more precise locations when reporting to eBird so that your observations are more valuable for analysis .

**Import Data**

Import data from a spreadsheet, database, or birding program. [Learn how](#)

# Important Websites

## eBird: Uploading Data

[http://help.ebird.org/customer/en/portal/articles/973915-uploading-data-to-ebird?b\\_id=1928](http://help.ebird.org/customer/en/portal/articles/973915-uploading-data-to-ebird?b_id=1928)

## Area Search in Acreage:

[http://www.mapdevelopers.com/area\\_finder.php](http://www.mapdevelopers.com/area_finder.php)