

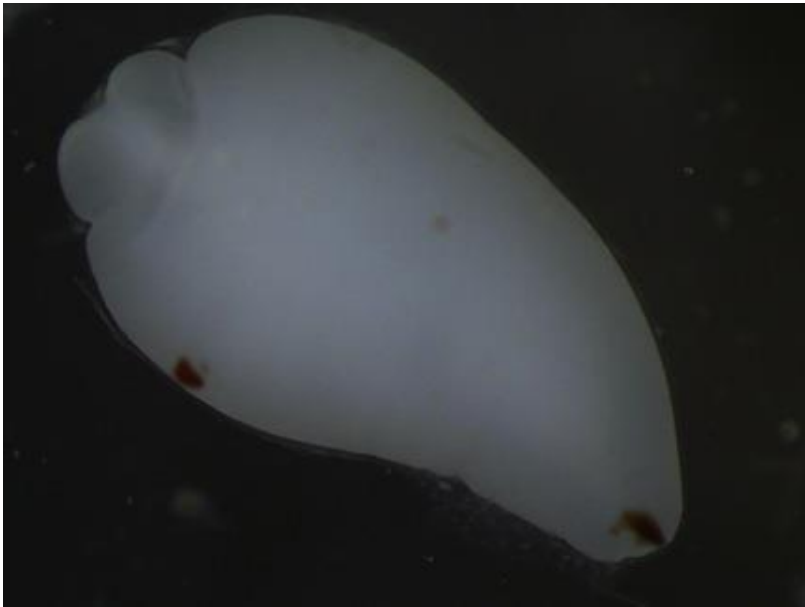


# Internal Parasites of Quail

**Worm Identification Guide**

**Contributed By: Andrea Bruno & Kelsey Bedford  
Edited By: Janel Ortiz  
2015**

**Acanthocephalan** larvae, Location: Neck Muscle Tissue



***Aulonocephalus pennula*** (A) anterior end and (B) posterior end of male Location: Ceca, Small and Large Intestine.



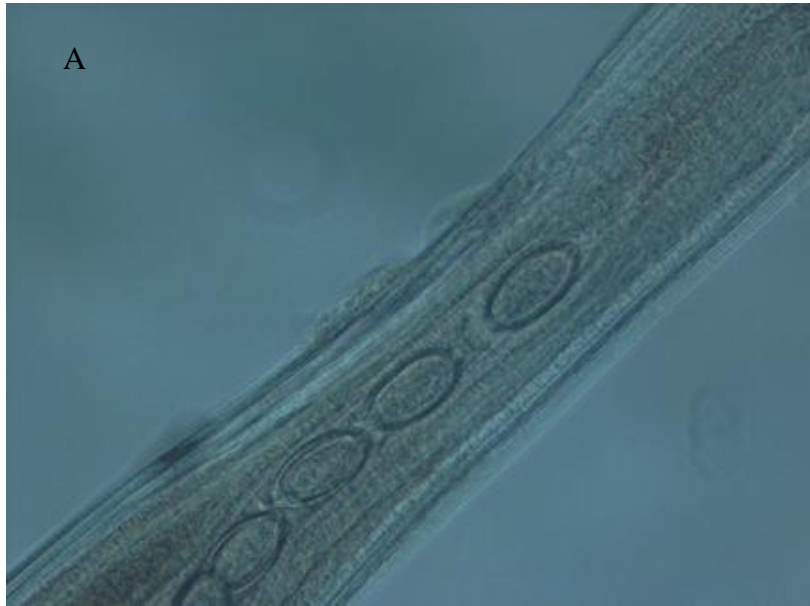
*Cheliospirura spinosa* (A) anterior end and (B) posterior end of a male, Location: Gizzard Lining



*Dispharynx nasuta* (A) anterior end and (B) posterior end of a female, Location: Proventriculus



***Eucoleus contortus*** (A) eggs in a female (B) posterior end of a female, Location: Small Intestine



***Gongylonema phasaniella*** (A) anterior end and (B) posterior end of a male, Location: Crop Lining



*Mediorhynchus papillosus*, anterior end,

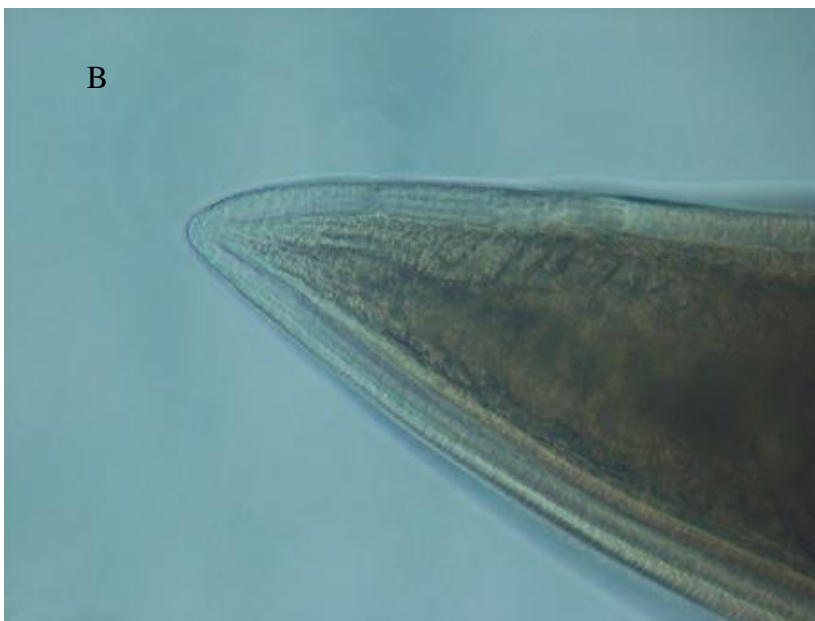
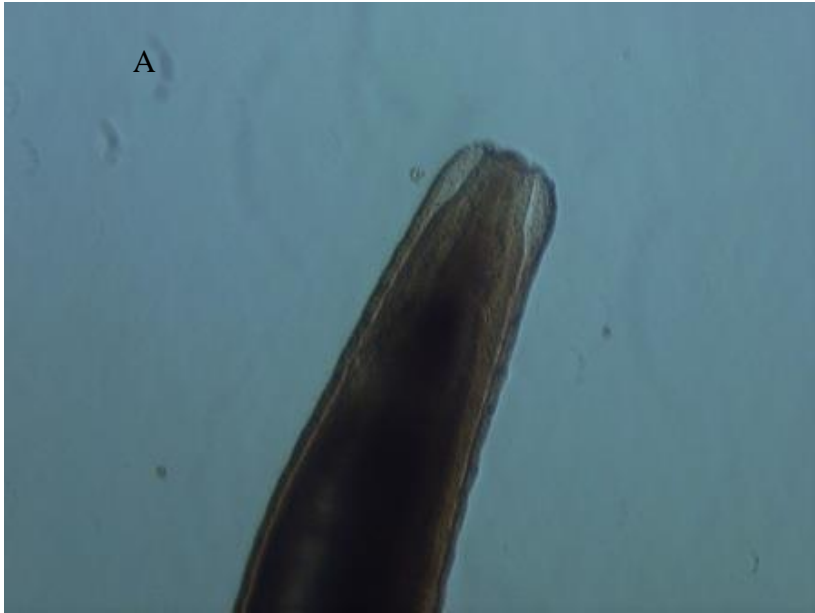
Location: Small Intestine



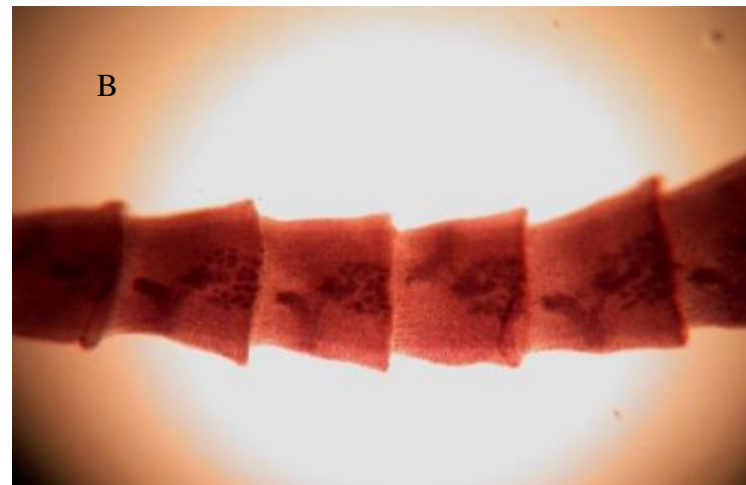
*Oxyspirura petrowi* (A) anterior end and (B) posterior end of a male, Location: Eye



***Physaloptera* sp.** (A) anterior end and (B) posterior end,  
Location: Breast Muscle

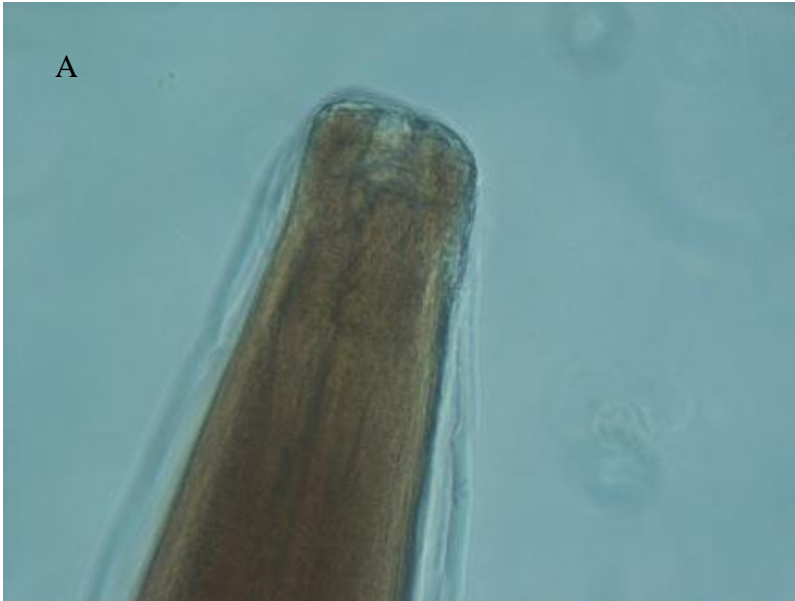


***Rhabdometra odiosa*** (A) scolex and (B) proglottids,  
Location: Small Intestine

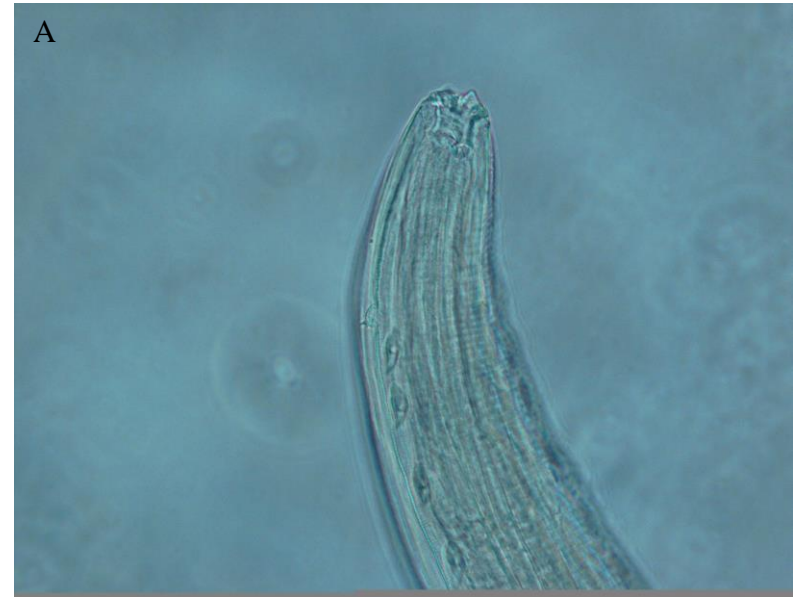




*Subulura brumpti* (A) anterior end and (B) posterior end of a male, Location: Small Intestine



*Tetrameres pattersoni* (A) anterior end and (B) posterior end of a male, Location: Proventriculus



*Procyrnea pileata* (A) anterior end and (B) posterior end of a male, Location: Gizzard & Proventriculus

